



Kokusai Express



Global Forwarding and Logistics Service Provider



 株式会社 国際エクスプレス  
KOKUSAI EXPRESS CO., LTD.



**HEAD OFFICE**

14th FL., Shinagawa Seaside Canal Tower B Bldg., 4-12-6  
Higashi-Shinagawa, Shinagawa-ku, Tokyo 140-0002 Japan  
TEL: (+)81-3-6748-0600 / FAX: (+)81-3-6748-0480



**TOKYO 1 Branch**

5-1-1 Tokai, Ota-ku, Tokyo-to 143-0001 Japan  
TEL: (+)81-3-5755-1011 / FAX: (+)81-3-5755-1005



**TOKYO 2 Branch**

4-2-3 Tokai, Ota-ku, Tokyo-to 143-0001 Japan  
TEL: (+)81-3-6303-6010 / FAX: (+)81-3-5755-8334



**TOKYO Airlines Branch**

1st FL., Kokusai Express Bldg., 4-2-3 Tokai, Ota-ku,  
Tokyo-to 143-0001 Japan  
TEL: (+)81-3-6412-9088 / FAX: (+)81-03-5492-0220



**YOKOHAMA Branch**

279-1 Yamashitacho Naka-ku, Yokohama-shi,  
Kanagawa-ken 231-0023 Japan  
TEL: (+)81-45-227-6261 / FAX: (+)81-45-227-6034



**OSAKA Branch**

2-3-37 Nankokita Suminoe-ku, Osaka-shi,  
Osaka-bu 559-0034 Japan  
TEL: (+)81-6-4703-1234 / FAX: (+)81-6-4703-1239



**KOBE Branch**

#801C GEETEX ASCENT Bldg., 6-1-20 Gokodori Chuo-ku,  
Kobe-shi, Hyogo-ken 651-0087 Japa  
TEL: (+)81-78-330-7093 / FAX: (+)81-78-330-7094



**Narita Branch**

No. 201, Honda Logistics inc. Narita Import / Export Center, 1116-1  
Kayamashinden Shibayama-machi, Sambu-gun, Chiba-ken 289-1601 Japan  
TEL: (+)81-479-85-6040 / FAX: (+)81-479-85-6045



**Kansai Branch**

1st International Cargo Agency Building 2nd Floor 0170A,  
1 Senshukuko Minami, Sennan-shi, Osaka-fu 549-0021 Japan  
TEL: (+)81-72-447-4188 / FAX: (+)81-72-447-4199



**KOREA Branch**

31, Gangseo-ro 56ga-gil, Gangseo-gu, Seoul 07583, Korea  
TEL: (+)82-2-3143-5555 / FAX: (+)82-2-3143-5588



**KOREA Gimpo Airport Branch Warehouse**

Gimpo Int'l Airport Freight Terminal, 1373, Gonghang-dong,  
Gangseo-gu, Seoul 07505, Korea  
TEL: (+)82-70-4693-5840 / FAX: (+)82-2-2662-5281



**KOREA Inside the Busan Customs Warehouse**

325 Shinsen-ro, Nam-gu, Busan 48548, Korea  
TEL: (+)82-70-4693-5840 / FAX: (+)82-2-2662-5281

Company Group e-mail : [japan@kokusaexpress.com](mailto:japan@kokusaexpress.com)  
[korea@kukjae.com](mailto:korea@kukjae.com)



株式会社 国際エクスプレス  
KOKUSAI EXPRESS CO., LTD.





# World wide network **KSE**



**Your path to success lies with meeting a partner you can trust.**

## VISION 2030



<b>Philosophy</b>	Seeking value, creation, and management with challenges and passion.
<b>Vision</b>	Strive for customer happiness management, value, relationship, and regime innovation.
<b>Policy</b>	Create tomorrow for dreams and hopes without fear of change.
<b>Objective</b>	1 trillion won in result, and 30 billion won in operating profit in 2030.
<b>Slogan</b>	Never say "No" KSE
<b>Discipline</b>	3S Spirit ( <b>S</b> afety · <b>S</b> urely · <b>S</b> peedy)



**kotra**  
(KOREA trade investment promotion Corporation)  
Logistics Department official designated contractor



**aT Center**  
(Korea aquatic produce food distribution corporation) Logistics Department official designated contractor



**KOSME**  
Officially designated logistics enterprise by Kotra, aT Center, and KOSME

陸



### Inland Transport

We deliver inland, maritime, and air transport services mainly by truck transportation across the country. We suggest the optimal transport method according to the size, shape, and weight of the cargo requested by the customer and deliver it to the location designated by the customer fast and efficiently at a low price.

海



### Maritime Transport

We are a licensed Non-Vessel-Operating Common Carrier (Freight Forwarder), providing import and export customs clearance and logistics consulting as well as international maritime cargo transportation services. We offer a wide array of maritime transport, including Less than Container Load (LCL) and Full Container Load (FCL), shipment services, and bulk carrier services.

空



### Air Transport

Kokusai Express (KSE) provides door-to-door delivery for all types of freight and the optimal transport routes and cost performance through global networks.



### Logistics Warehouse

KSE ensures safe storage and handling of cargo through a breach-proof security system. KSE is a logistics hub, running logistics centers in major locations across the country.



### Global e-commerce logistics International shipping service

We offer convenient and affordable services that deliver not just your items but your sincerity and thoughtfulness.

- Premium Air Service
- Economy Ferry Service-KSE Service



### Moving Service

- Overseas moving
- Domestic moving
- Office relocation

KSE offers a comprehensive coordinating service for all procedures related to moving.



### Logistics Consulting

We offer logistics consulting from planning, designing, and execution from the customer's perspective, providing excellent customer service in logistics.



### EC Fulfillment

KSE, a logistics agency, specializes in e-commerce logistics and employs a warehouse management system (WMS) to manage supply chain fulfillment operations from the distribution center to the store shelf.



### Customs Clearance

Under the motto of 'increase accuracy, speed, and safety,' our staff versed in the laws and regulations of each country check the necessary business procedures for import and export customs clearance and provide overall support for related business processes.



### Exhibition Cargo

- Exhibition cargo
- Performance cargo
- Artworks, etc.

We provide safe and fast service from packaging, storage, transportation, import, installation, and export of all types of cargo.



### Project Cargo Transport

KSE, with years of transportation experience and know-how, offers service for oversized project cargoes, such as ultra-heavy items, bulk shipments, large plants, and factory facility relocation.



### Semiconductor & FPD Equipment Transport

KSE, a full-service logistics company with 30 years of transportation experience and know-how, provides semiconductor & Flat Panel Display (FPD) manufacturing equipment transportation service. We strive to meet the needs of corporate clients.



Founded in 1990, Kokusai Express Co., Ltd. is a representative national logistics company in Japan with Korea-Japan economic growth.

Greeting



CEO & President

KSE, established in 1990, is Japan’s leading national logistics company that has been with the economic development of Korea and Japan every step of the way.

KSE has realized an optimal logistics service based on the innovations and know-how accumulated in the highly-exclusive Japanese logistics market with high barriers to entry, and is providing the highest levels of customer satisfaction and competitiveness. We have grown into a total logistics company that offers logistics across all areas.

Our management motto is “CS management”, which puts customer values above all else, and we are concentrating all our resources on establishing a system that will enable on-time deliveries of customer orders without fail and on improving quality. We are also working hard to establish an “efficient management” system through logistics base integration and efficient warehouse management.

In accordance with the changing corporate environments in the era of globalization and the trends of international logistics, KSE is accelerating its efforts in “Future Management” that will establish the core capabilities which will allow us to respond to uncertain future events. Hence, KSE plans to continuously innovate logistics information system infrastructures and develop professional Global Logistics personnel.

KSE promises to provide customers with the best logistics services by becoming a leading company in the logistics revolution of the 21st Century digital era and a reliable digital logistics specialist.

CEO & President  
HAGA WATARU  
Kokusai Express Co., Ltd.

*W. Haga.*

Company Identity

株式会社 国際エクスプレス  
KOKUSAI EXPRESS CO., LTD.

ワールドトレーディング(株)  
WORLD TRADING CO., LTD.

(株) 国際ロジстик  
KOKUSAI EXPRESS KOREA

KOKUSAI EXPRESS CO., LTD.

KJ LOGISTICS  
KJ LOGISTICS CO., LTD.

(주) 국제로지스틱  
KOKUSAI EXPRESS KOREA

주식회사 국제익스프레스  
KOKUSAI EXPRESS CO., LTD.

eFEX.jp  
e-commerce Fulfillment & Express

KUKJAE LOGISTICS CO., LTD.

**Tomozzang ?** “Tomozzang” means friends who always be with. It symbolized hard work, sincere ants and represents the birth and leap of a cutting-edge company.  
**Blue** : Bright future, Hope, Peace **Green** : Eco, Safe **Red** : Youth, passion

Company Introduction



Company Name	KOKUSAI EXPRESS Co., Ltd.
Established	March 1990
Capital	4 million U.S.dollars
Head Office	14th FL., Shinagawa Seaside Canal Tower B Bldg., 4-12-6 Higashi-Shinagawa, Shinagawa-ku, Tokyo-to, Japan
Tokyo 1 Branch	5-1-1 Tokai, Ota-ku, Tokyo-to, Japan
Tokyo 2 Branch	4-2-3 Tokai, Ota-ku, Tokyo-to, Japan
Tokyo Airlines Branch	4-2-3 Tokai, Ota-ku, Tokyo-to, Japan
Yokohama Branch	279-1 Yamashitacho Naka-ku, Yokohama-shi, Kanagawa-ken, Japan
Osaka Branch	2-3-37 Nankokita Suminoe-ku, Osaka-shi, Osaka-fu, Japan
Kobe Branch	#801C GEETEX ASCENT Bldg., 6-1-20 Gokodori Chuo-ku, Kobe-shi, Hyogo-ken, Japan
Narita Branch	No. 201, Honda Logistics inc. Narita Import / Export Center, 1116-1 Kayamashinden Shibayama-machi, Sambu-gun, Chiba-ken, Japan
Kansai Branch	1st International Cargo Agency Building 2nd Floor 0170A, 1 Senshukuko Minami, Sennan-shi, Osaka-fu, Japan
Korea Office	3th FL., Wookyung Bldg., 31, Gangseo-ro 56ga-gil, Gangseo-gu, Seoul, Korea
No. of Employees	300

**Business Details**  
Customs clearance, warehousing, overseas moving, truck transport, maritime export/import cargo transport, air export/import cargo transport, international parcel delivery, general port transport, exhibit/performance/project cargo, packing, LCL consolidation FCL service, E-commerce(B2B B2C)

- History**
- 2021 - Started marine B2C service(Japan, Korea)
  - 2019 - Changed the name of each sales office
  - 2018 - Official designated company for Logistics Department
  - 2017 - Started Kansai airport office establishing service
  - 2015 - Started Narita Customs Clearance Center establishing service
  - 2014 - Started Tokyo Second bonded warehouse service
    - Acquired the Haneda Airport bonded warehouse business license and started the service
    - Moved the head office
    - Established Kukjae Logistic Co., Ltd at Gimpo Airport Branch as branch in Korea
    - Registered Kukjae Logistic Co., Ltd, the branch in Korea, as a special delivery business at Gimpo Airport Customs and start the air courier service
  - 2012 - Registered Kukjae Logistic Co., Ltd, the branch in Korea, as a special delivery business at Incheon Customs and started the ocean courier service
    - Concluded the Tokyo agency contract with CJ GLS
  - 2011 - Established the Haneda Airport branch office (Air) and started the import and export custom clearance service
    - Received the grand award in the area of international logistic at 2011 Korea Customer Satisfaction Grand Prix (Hankook Ilbo)
  - 2010 - Established World Trading Co., Ltd, the Japanese corporation, and KJ Logistics Co., Ltd.
    - Concluded the contract of [Korean agricultural product and fisheries logistic service provision] with Korea Agro-Fisheries Trade Corp. (aT Center in Tokyo)
  - 2009 - Concluded the contract for Tokyo-Korea Joint Logistic Center Project] with Korea Trade Association (KOTRA)
    - Establish the Kyushu office (Mojji, Hakata, Shimonoseki) and started the custom clearance service
    - Acquired the specific air cargo transportation business license and air transportation agency business license
  - 2008 - Established Kobe Office and started the custom clearance service
    - Started the international ocean courier service
    - Acquired IATA (International Air Transport Association )license
  - 2007 - Moved the Osaka office (to current location)
    - Started the Osaka bonded warehouse CFS service and custom clearance service
    - Acquired the Class 2 air cargo transportation business license
    - Started the International air courier service
  - 2006 - Started Tokyo bonded warehouse CFS service
    - Concluded the Japanese courier agency contract with Hanjin Co., Ltd.
    - Received the grand prize in the area of logistic and transportation service at 2006 Korea Customer Satisfaction Grand Prix (held by Hankook Ilbo)
  - 2004 - Established the Tokyo office and started the custom clearance service
    - Acquired the cargo truck transportation business license, Class 1 and Class 2 cargo transportation business license, and international complex transportation business (NVOCC) license
    - Acquired the Class 1 cargo transportation business license for the outer port transportation
  - 2003 - Established the Yokohama office
    - Started the Yokohama bonded warehouse CFS service and custom clearance service
    - Acquired the warehouse business license, general cargo truck transportation business license, and Class 1 cargo transportation business license
    - Acquired the JIFFA (Japan International Freight Forwarders Association Inc) license
  - 2002 - Acquired the KIFFA (Korea International Freight Forwarders Association Inc) license
  - 1999 - Founded Kokusai Express Co., Ltd.
  - 1990 - Founded Kokusai Express

TOKYO 1 Branch



TOKYO 2 Branch



YOKOHAMA Branch



OSAKA Branch





# Organization



# LICENSE



# Media Coverage





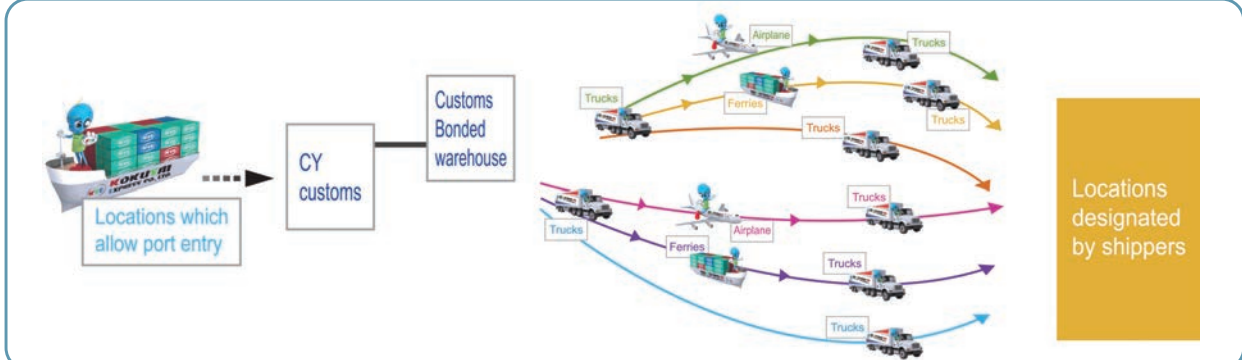


Inland Transport Service



## Inland Transport Service

KSE, with its extensive networks and state-of-the-art transportation system, offers domestic transportation by land service. We have a wide array of transport vehicles suitable for various sizes and contents of international and domestic cargo. We try our best to respond to customer needs by selecting transportation routes that minimize transportation costs for our customers.



Your path to success lies with meeting a partner you can trust.





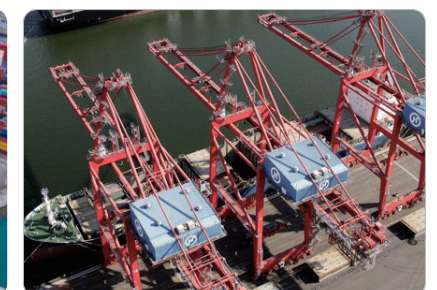
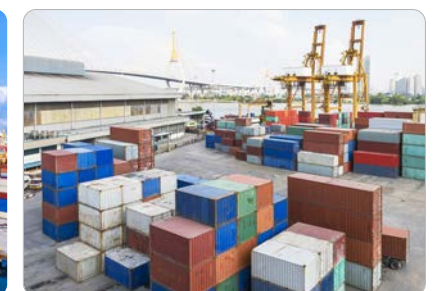
*Maritime Freight Service*



## Maritime Freight Service

KSE, with its advanced logistics system powered by its global networks, provides transportation by sea service. We offer the best service at the lowest price for project cargoes such as containers and bulk items, contributing to logistics cost reduction on the part of our customers.

- Global Less Than Container (LTC) service (LCL Consolidation)
- Full Container Service (FCL)
- Special Container Service (Reefer, Open Top, Flat Rack, Tank...)
- Bulk Cargo Service







*Air Freight Service*

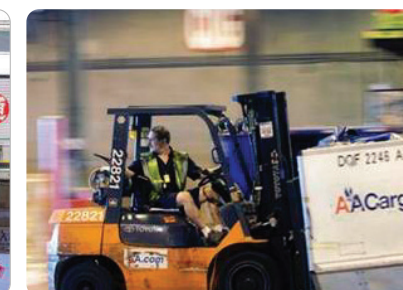
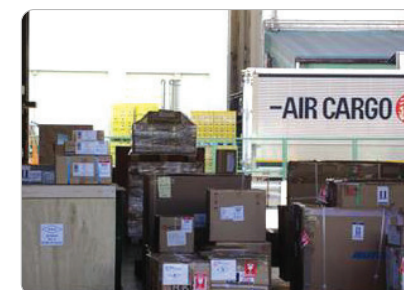


## Air Freight Service

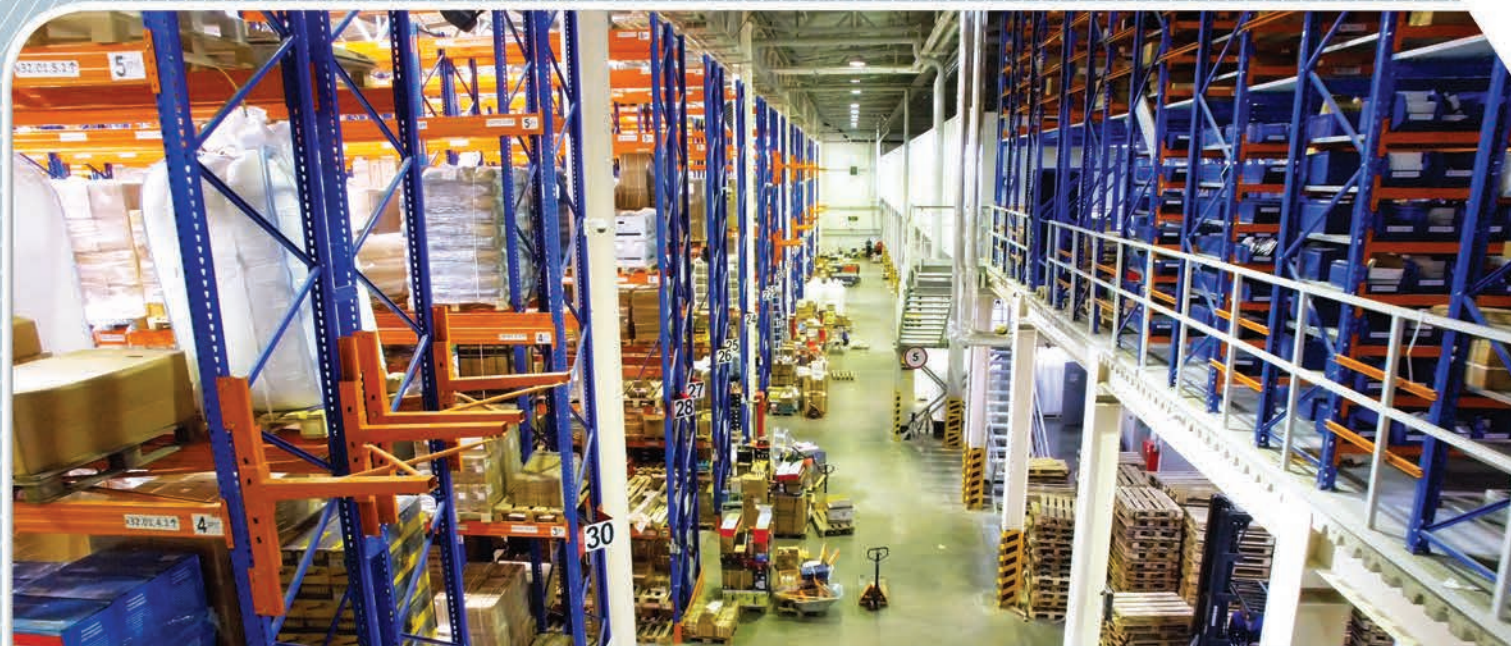


KSE, based on its close partnership with leading global companies with logistics know-how, provides air freight service. We offer the best possible service through our global networks.

- Global Less Than Container (LTC) service (LCL Consolidation)
- SEA & AIR transportation service
- Door-to-door services with pickup, packaging, customs clearance and air freight included
- Border crossing transportation service between three countries via global networks







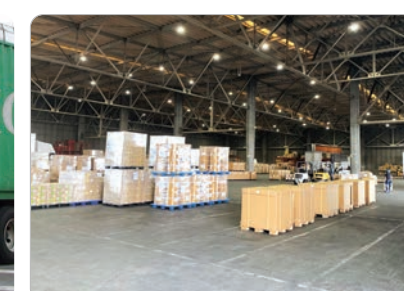
Warehousing Service



## Warehousing Service

KSE helps customers reduce their logistics spending through warehouse storage distribution and customs clearance, packaging, and transportation services. We provide customer-oriented solutions through distribution and processing services and partnerships in storage, delivery, and transportation to ensure timely delivery.

- Warehousing service, based on ample experience and technologies, tailored to the types of cargo
- Unloading and storage services at bonded warehouses
- Third country transshipment service
- Additional business services such as cargo weighing, picking, labeling, and packaging







Global e-commerce logistics International shipping service



## Global e-commerce logistics International shipping service

Please leave global e-commerce logistics International shipping service of air and sea to the number one KSE in Japan.



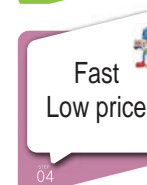
- We tap into our accumulated know-how to deliver your cargo with assurance, security, and certainty.
- You can check the delivery status and trace the current status on the Internet.



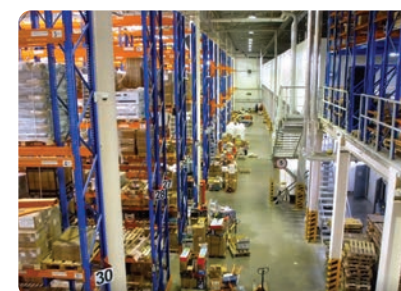
- We offer a wide range of services that meet the needs of our customers, including reasonable sea freight, fast air express, and forwarding services.



- We do our utmost to deliver your cargo to your destination for you.



- We provide fast sea delivery (high-speed ferry) at an affordable price.



“Door to Door Service”





*Overseas · Domestic Moving, Office · Factory Relocation Service*



## Moving Service

KSE, with the best know-how accumulated over 30 years and a professional workforce, provides total door-to-door services from packing, transportation, storage, and customs clearance, to delivery. Entrust us with overseas and domestic moving and office and factory relocation.

### Overseas moving (Embassies and companies)

We provide room-to-room moving service worldwide through a global network connecting 190 countries and some 420 cities.

### Domestic moving

We provide reliable domestic moving service at reasonable prices.

### Office and factory relocation service

- Office relocation, facility relocation, and installment
- Relocation and disposal of factory manufacturing facilities, industrial facilities, special equipment, and automation facilities.







*Logistics Consulting*



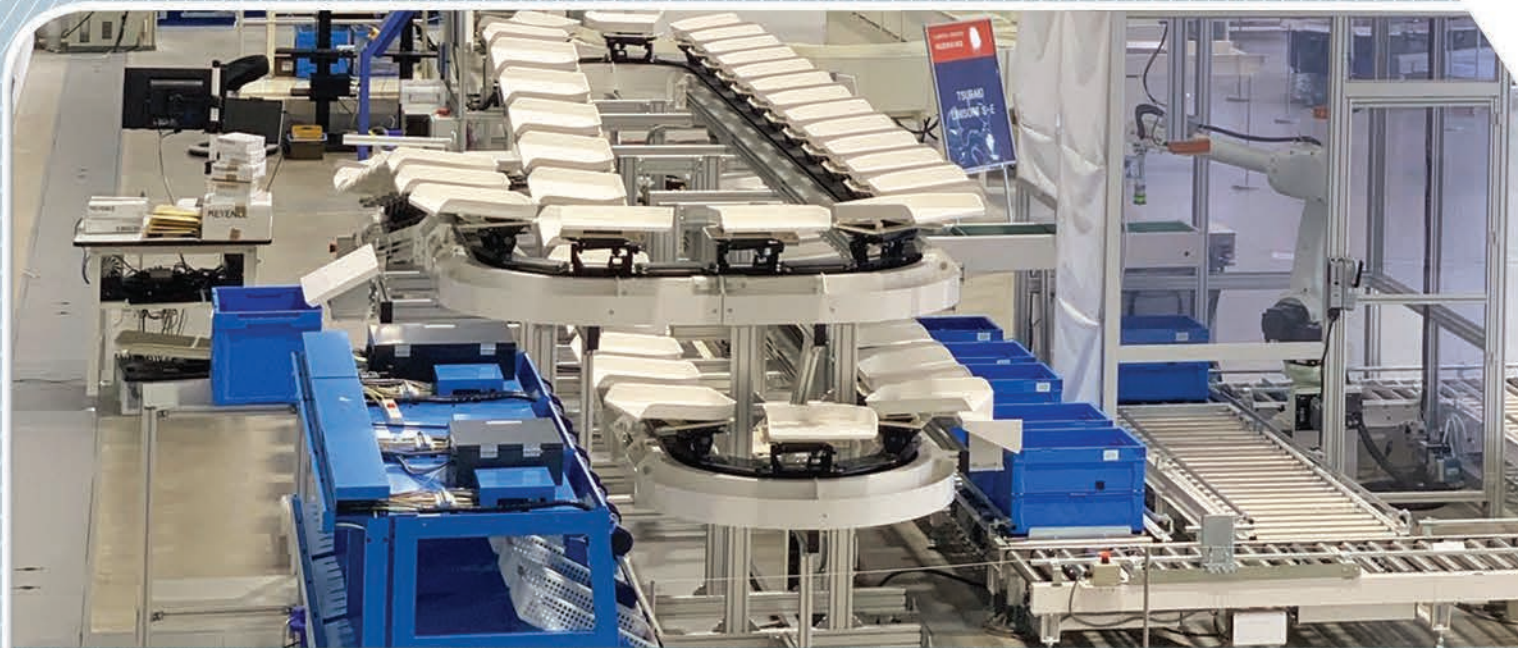
## Logistics Consulting

KSE offers '3PL Service', a logistics consulting service that encompasses the planning, designing, and execution of logistics from the customer's perspective. We offer the best and optimal logistics to our customers from our professional logistics perspective.

- The best logistics system to help customers enhance competitiveness
- Expertise and know-how
- Network, logistics system
- Service diagnostics and quality control







Fulfillment Service



## Fulfillment Service

KSE specializes in global e-commerce logistics and uses a warehouse management system (WMS), an integrated approach to a series of businesses that customers need.

### Strengths of total logistics~

#### One-stop service!

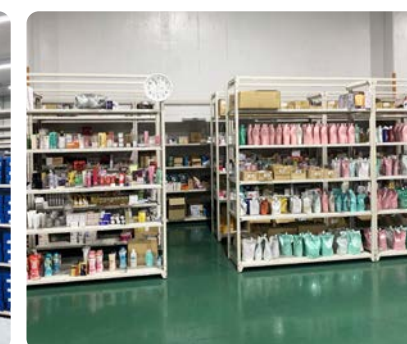
We help our customers save their precious time and effectively address their concerns about logistics. We provide a one-stop total logistics service from overseas to Japan, export customs clearance, sea/air transport, import customs clearance in Japan, inland transport, warehousing, and fulfillment services.

#### Logistics company of choice for Korean companies!

Japan's Kokusai Express is a go-to logistics agency for Korean companies. Our Korean staff supports your business to perform at its best in Japan with prompt service and flexible response that fits the Korean sentiment without language barriers.

#### Logistics know-how built over 30 years!

KSE is a full-service logistics company that has devoted itself to logistics for 30 years. We meet the needs of corporate clients by providing B2C fulfillment services based on our deep understanding of Japan's online market and know-how as well as B2B logistics, a part of an effort to keep pace with the times.







## Import & Export Customs clearance Service



## Import & Export Customs clearance Service

We have deployed KSE distribution centers and specialized customs officials at major ports and airports to respond to various types of transportation by land, sea, and air.

### CUSTOMS LICENSE



#### Customs clearance process

The process of getting permission for exporting and importing cargoes is referred to as 'customs clearance'. The customs office checks the accuracy and adequacy of declarations and inspects the cargoes when necessary. Import of imported goods is allowed after the payment of due tariffs, and excise duties is confirmed.

#### Export process

Safe and durable packaging, considering the characteristics of the cargo and the logistics situation of the destination, is required. In addition to customs clearance, we prepare export and shipping documents for you.

#### Import process

Entrust us with the quarantine of animals and plants, complicated customs procedures related to food import. We coordinate optimal domestic transportation using trucks, domestic ships, and railroads.







*Transport of Properties for Exhibitions, Performances, and Artworks*



## Exhibition Cargo

KSE specializes in transporting properties for exhibitions and performances, and artworks.

Entrust us with cargoes for exhibitions and events, and we will deliver reliable services with professional skills and know-how.

- 2000 Korea-Japan cultural exchange exhibition SUPER EXPO 2000 (Over 100 companies participated)
- 2002 FIFA World Cup Korea-Japan Logistics management (105 companies participated)
- 2009 Korea-Japan Festival 2009 in Tokyo
- 2010~Present International Packaging Exhibition 2010 in Tokyo
- 2011~Present Industrial Machinery Exhibition 2011 in Tokyo



Freight Motor Show Exhibition



Freight Motor Show Exhibition



National Music Academy concert commemorating the Korean President visited Japan



Loan exhibition of the Imperial Household Agency of Japan



Celbration of cargo "2002 FIFA World Cup"



Celbration of cargo "2002 FIFA World Cup"





Heavy Bulk Project Cargo Transport



## Heavy Bulk Project Cargo Transport

KSE, based on accumulated know-how in heavy bulk cargo transport projects, provides a wide range of services, including ultra-heavy and lengthy cargoes whose transportation requires the handling of special equipment and specialized knowledge and skills.

### Our services

- Export packaging for industrial machines and factory facilities moving overseas, domestic transportation, customs clearance, storage, unloading, insurance coverage, sea transportation, a full delivery service to the destination
- Ultra-heavy, lengthy, project cargoes, bulk items, transportation services
- Wooden box packaging service for precision industrial machines, overseas construction materials and equipment, and plant equipment
- Vacuum packaging of robots, aircraft parts, and semiconductor equipment
- Domestic transportation, customs clearance, storage, unloading, insurance coverage, and sea transportation services







Japan Joint Logistics Center Korea (KOTRA)



## Japan Joint Logistics Center Korea (KOTRA)

Consignment project to reduce logistics costs of Korean companies exporting to Japan

As a designated official logistics enterprise by Kotra, the Korea Trade Investment Promotion Corporation, and at Center, KSE operates the supporting joint logistics center to reduce logistics expenses for small and medium-sized enterprises.

### Merit

#### 1. Payment of logistic assistance in cash

Reducing the logistics cost of an enterprise by providing subsidies when performance occurs

#### 2. Low logistics costs

[Japan & Korea Joint logistics center] Offering low cost when using joint logistics center service than usual.

#### 3. Operation of local distribution centers

Outsourcing all duties, such as the operation of bonded warehouses, customs clearance, and transportation, inventory management, etc.

- Minimize trial and error in the operation of the logistics center by utilizing KCE local expertise
- Reduce initial investment costs (warehouse rental, new construction, transportation, and delivery systems)
- Strengthen competitiveness in logistics by realizing small volume and short term delivery







*Precision Machinery and Equipment Transport Service*



Precision Machinery and Equipment Transport Service

SONY SAMSUNG TOSHIBA LG SHARP

### 1. Factories export plan



### 2. Working in factory packaging



### 3. Factories export operations



### 4. KSE Warehouse packing job



### 5. Overseas sales (Osaka ↔ Pusan, Hakata ↔ Pusan, Japan ↔ Worldwide)





# CFS(Bonded Warehouse) Status

Tokyo Warehouse



**TOKYO 1 OFFICE**  
 5-1-1, Toukai, Otaku, Tokyo, Japan  
 TEL:81-3-6412-9377  
 FAX:81-3-6412-9388

Tokyo 2 Warehouse



**TOKYO 2 OFFICE**  
 4-2-3, Tokai, Ota-ku, Tokyo, Japan  
 TEL:81-3-5755-1011  
 FAX:81-3-5855-1005

Yokohama Warehouse



**YOKOHAMA OFFICE**  
 279-1, Yamashita-Cho, Nakaku, Yokohama-city, Kanagawa  
 TEL:81-45-227-6261  
 FAX:81-45-227-6034

Osaka Warehouse



**OSAKA OFFICE**  
 2-3-37, Nankokita, Suminoe-ku, Osaka-shi, Osaka-bu, Japan  
 TEL:81-6-4703-1234  
 FAX:81-6-4703-1239

HAKATA

KOBE

NAGOYA

MOJI

SHIMIZU

FUKUOKA

HAMAMATSU

TOMAKOMAI

HACHINOHE

AKITA

SHIOGAMA

SAKATA

NIGATA

TOYAMA SHINKO

NAGOYA

NAGOYA

SHIMZU

HIROSHIMA

HIROSHIMA

SHIMONOSEKI

SHIMONOSEKI

IMABARI

OITA

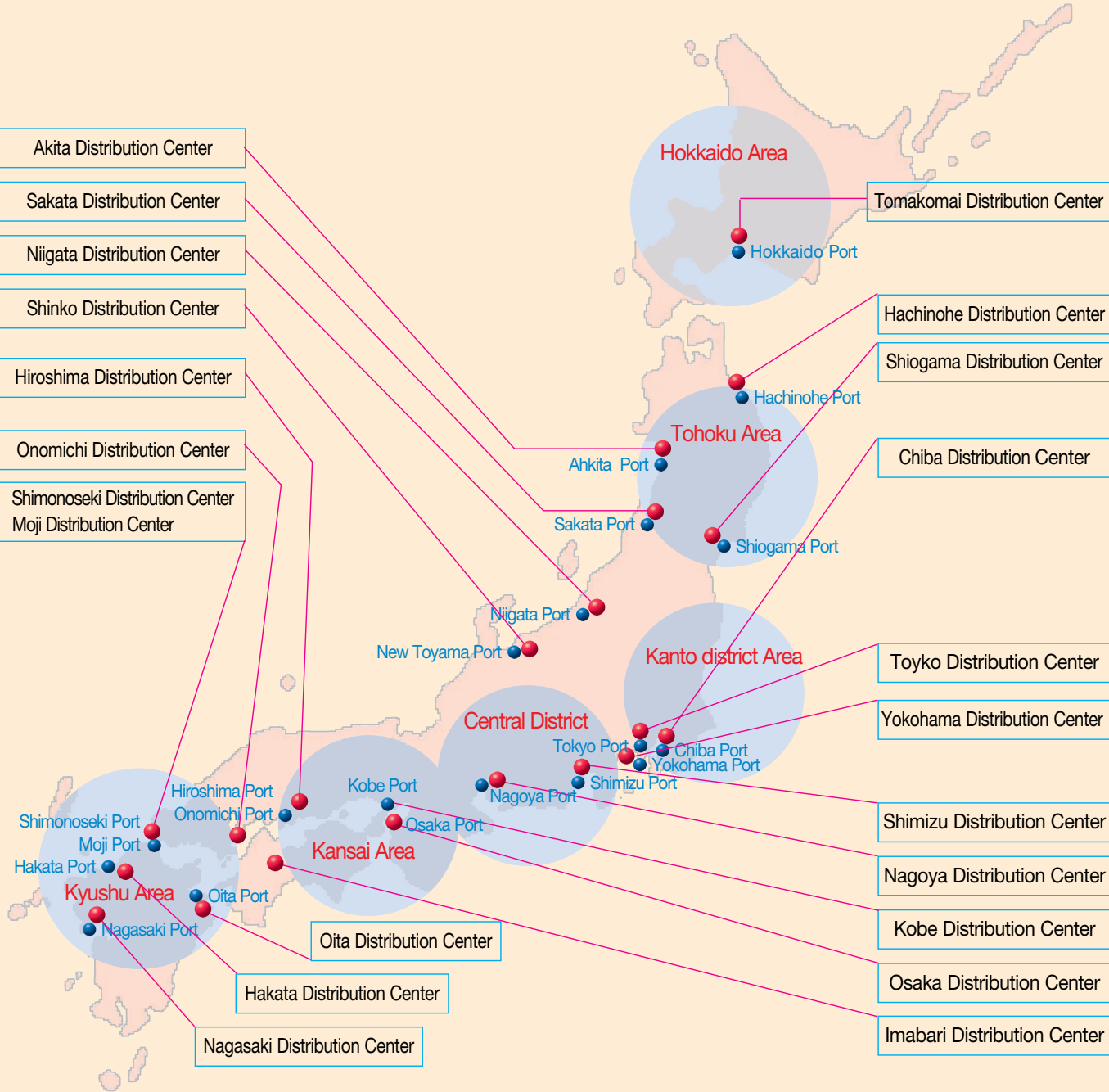
HAKATA

YOKOHAMA

# KSE Network

Distribution Center

Port





Inland Transport Service



Maritime Freight Service



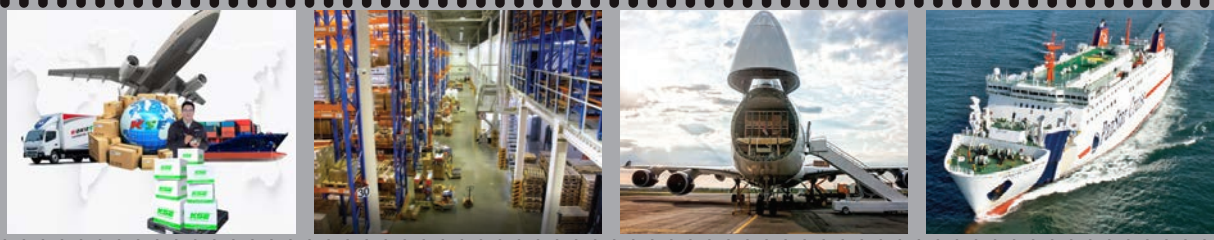
Air Freight Service



Warehousing Service



Global e-commerce logistics International shipping service



Moving Service



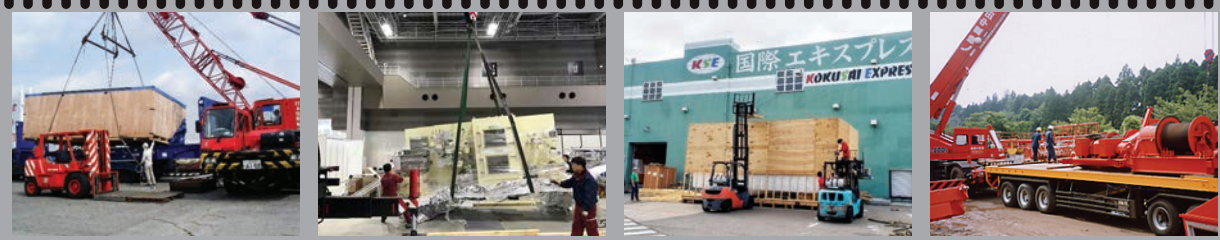
Customs Clearance



Exhibition Cargo



Heavy Bulk Project Cargo Transport



Logistics Consulting Fulfillment Service



kotra atCenter KOSME Officially designated logistics enterprise



Precision Machinery and Equipment Transport Service

